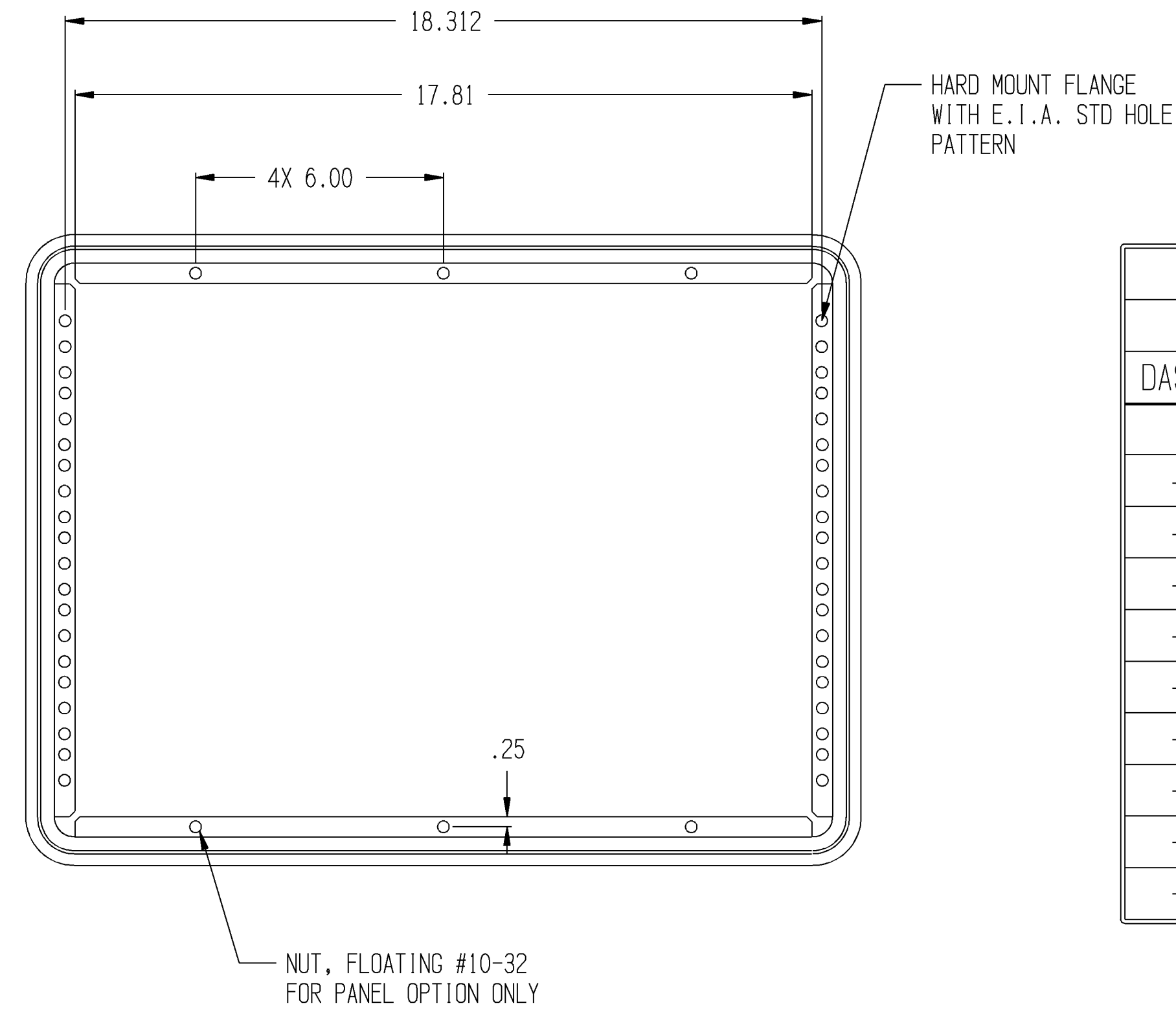
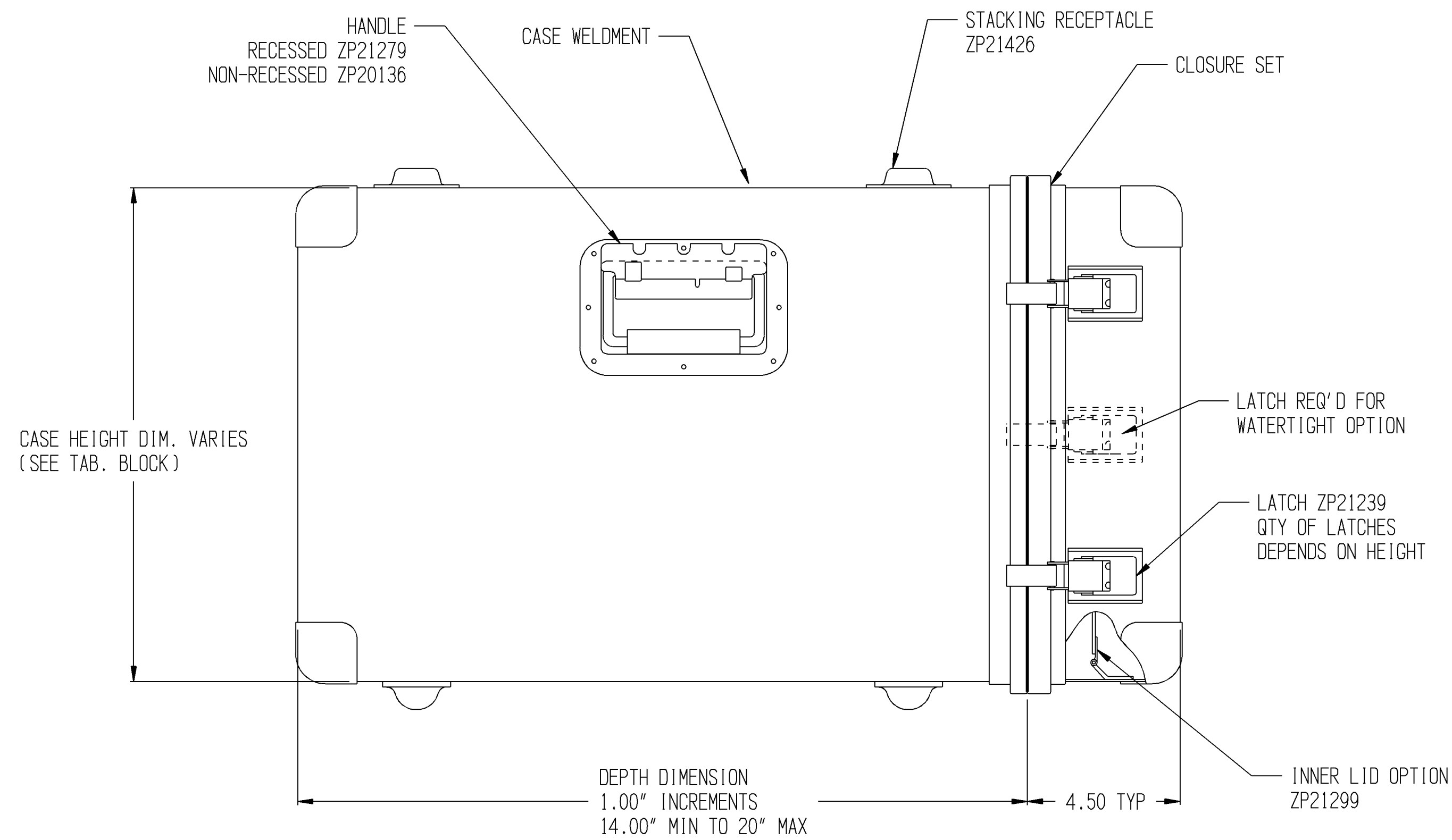


REVISIONS				
ZONE	REV	DESCRIPTION	DATE	APPROVED

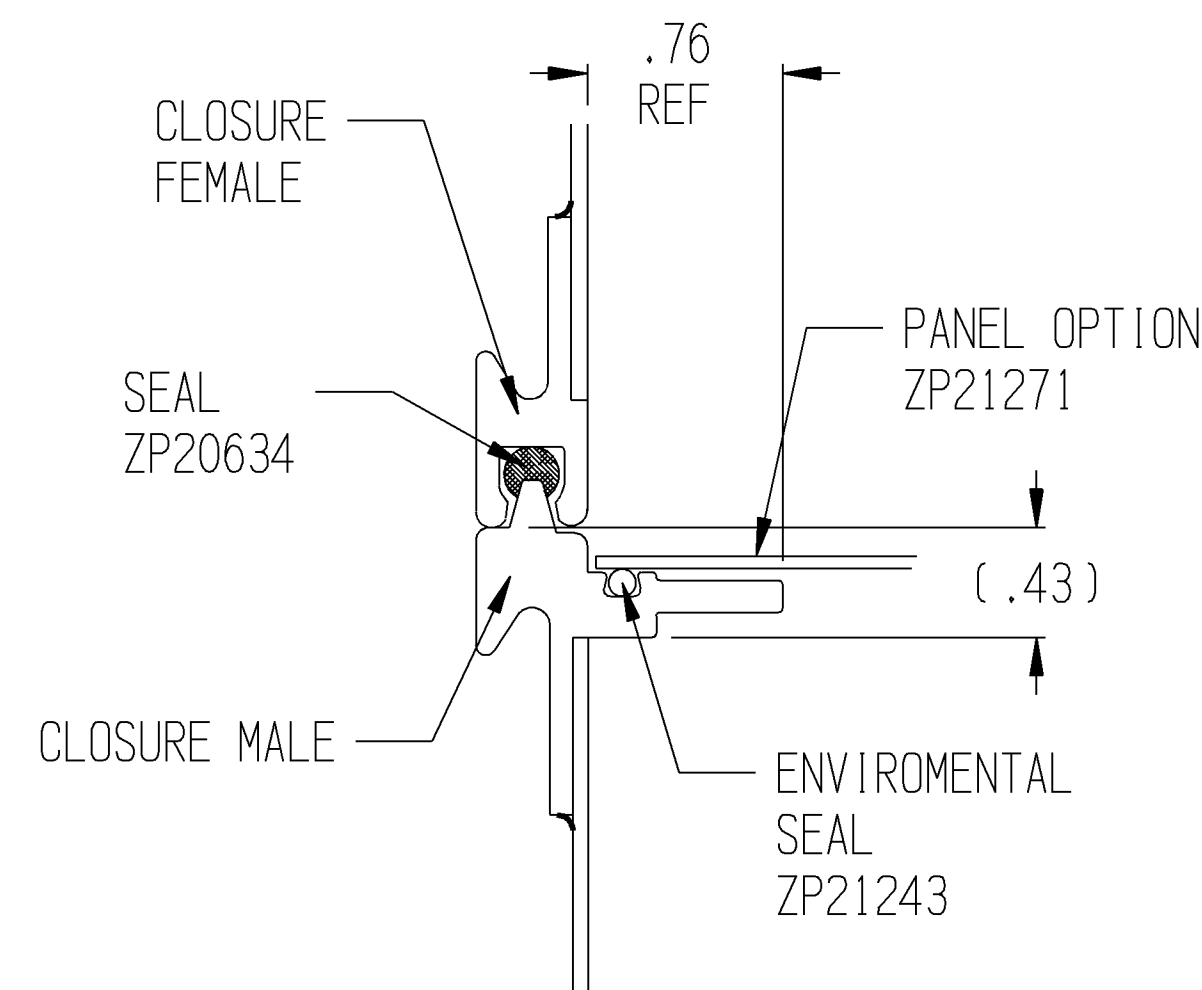
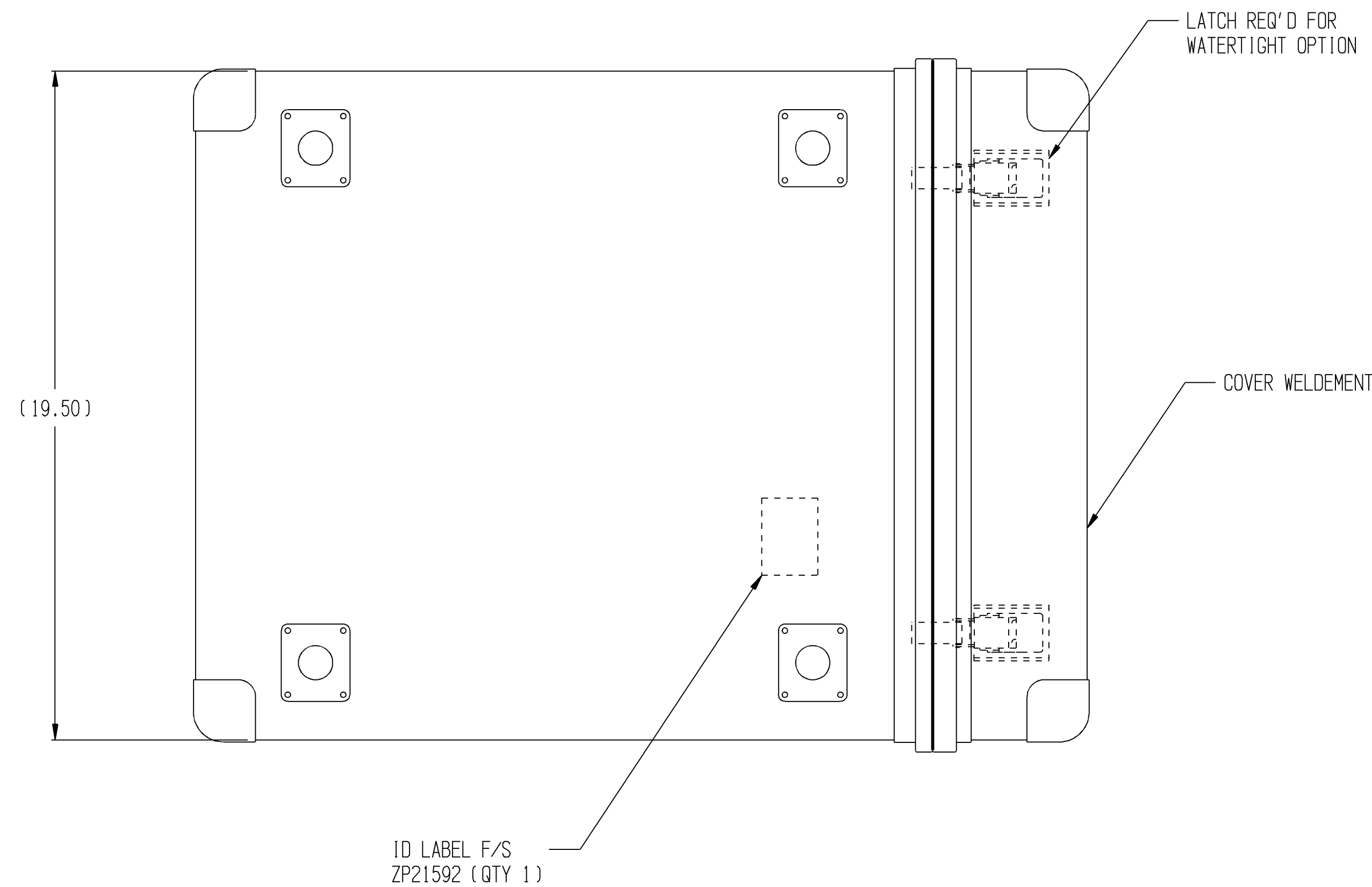


TABULATION BLOCK				
DASH NO.	PANEL HEIGHT DIM		CASE HT.	FRAME OPENING (REF)
	DIM	REF.		
-	SPECIAL SIZE			
-5	5.25	(3U)	6.94	5.25
-7	7.00	(4U)	8.69	7.00
-8	8.75	(5U)	10.44	8.75
-10	10.50	(6U)	12.19	10.50
-14	14.00	(8U)	15.69	14.00
-17	17.50	(10U)	19.19	17.50
-21	21.00	(12U)	22.69	21.00
-24	24.50	(14U)	26.19	24.50
-28	28.00	(16U)	29.69	28.00

FRONT VIEW
COVER REMOVED

NOTES:

1. WATERTIGHT PER MIL-STD-108, ZERO TEST NO. 1
DRIP PROOF PER MIL-STD-108, NO TEST REQUIRED.
2. CASES WITH PANEL HEIGHT 10U AND UNDER AND CENTER SECTION WITH DEPTH UNDER 22.00" LONG, USE .063" THICK MATERIAL.
CASES WITH PANEL HEIGHT OVER 10U AND CENTER SECTION WITH DEPTH OVER 22.00" LONG, USE .090" THICK MATERIAL.
3. CLIP NUT QUANTITY PER PANEL HEIGHT. SHIP LOOSE.
-5 QTY 12 -14 QTY 16 -28 QTY 24
-7 QTY 12 -17 QTY 16
-8 QTY 12 -21 QTY 16
-10 QTY 16 -24 QTY 20
4. SHIP CASE UNLATCHED WHEN NO VALVE REQUIRED.
5. MAXIMUM EQUIPMENT WEIGHT 150 LBS.
6. PROTECTION LEVELS: 30 G'S FROM 18.00" DROP HEIGHT.



CLOSURE DETAIL

WATERTIGHT AND DRIP PROOF OPTIONS
SHOWN ON SHEET 1

This document and the drawings and the technical data contained hereon are the property of Zero Mfg. Inc., formerly APW Zero Cases, Zero Enclosures, and Zero Mfg. Co. Reproduction or dissemination in any form except as expressly authorized by the owner is forbidden. The holder agrees to return this document to the owner on demand.
Copyright by Zero Mfg. Inc.

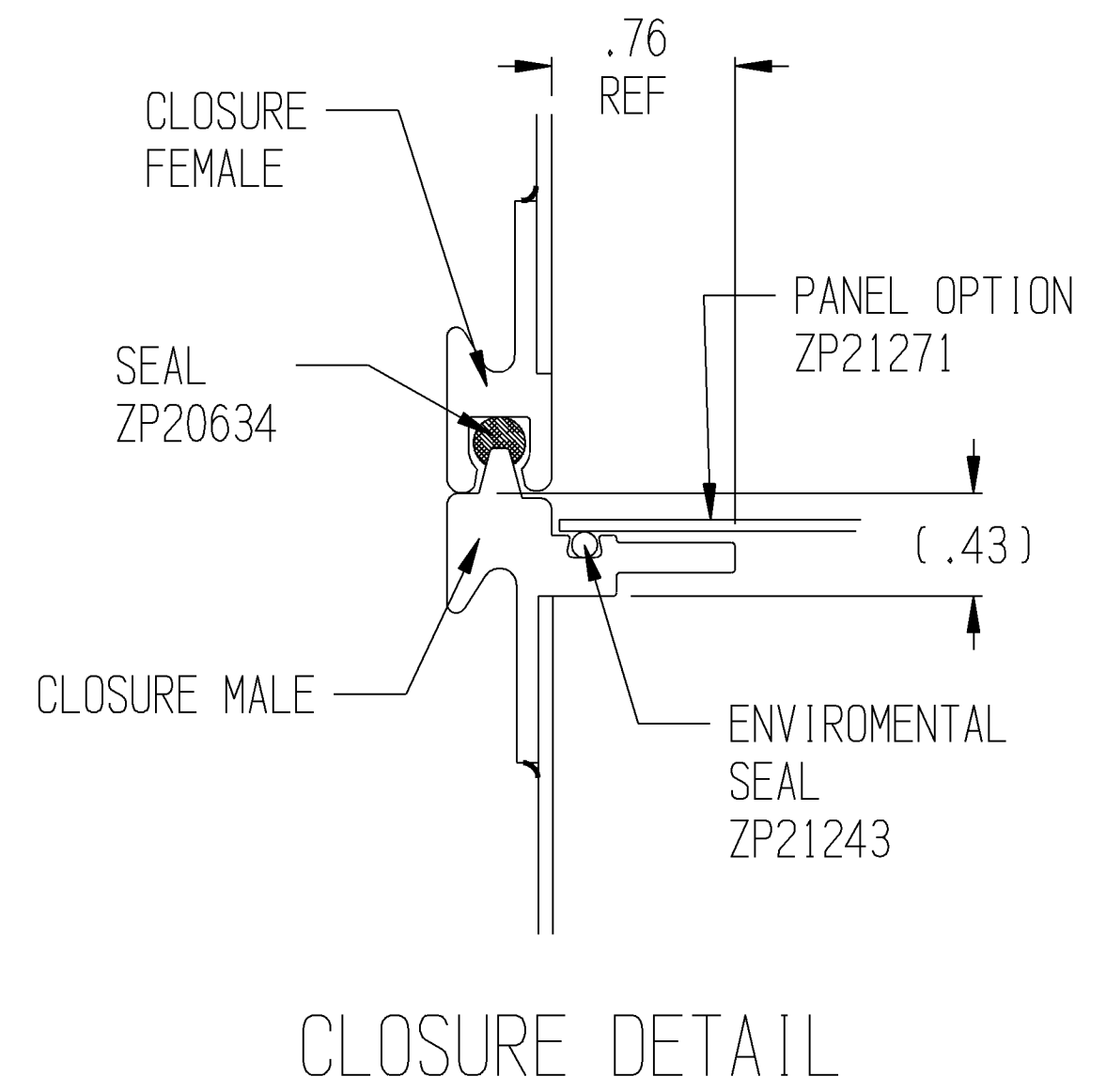
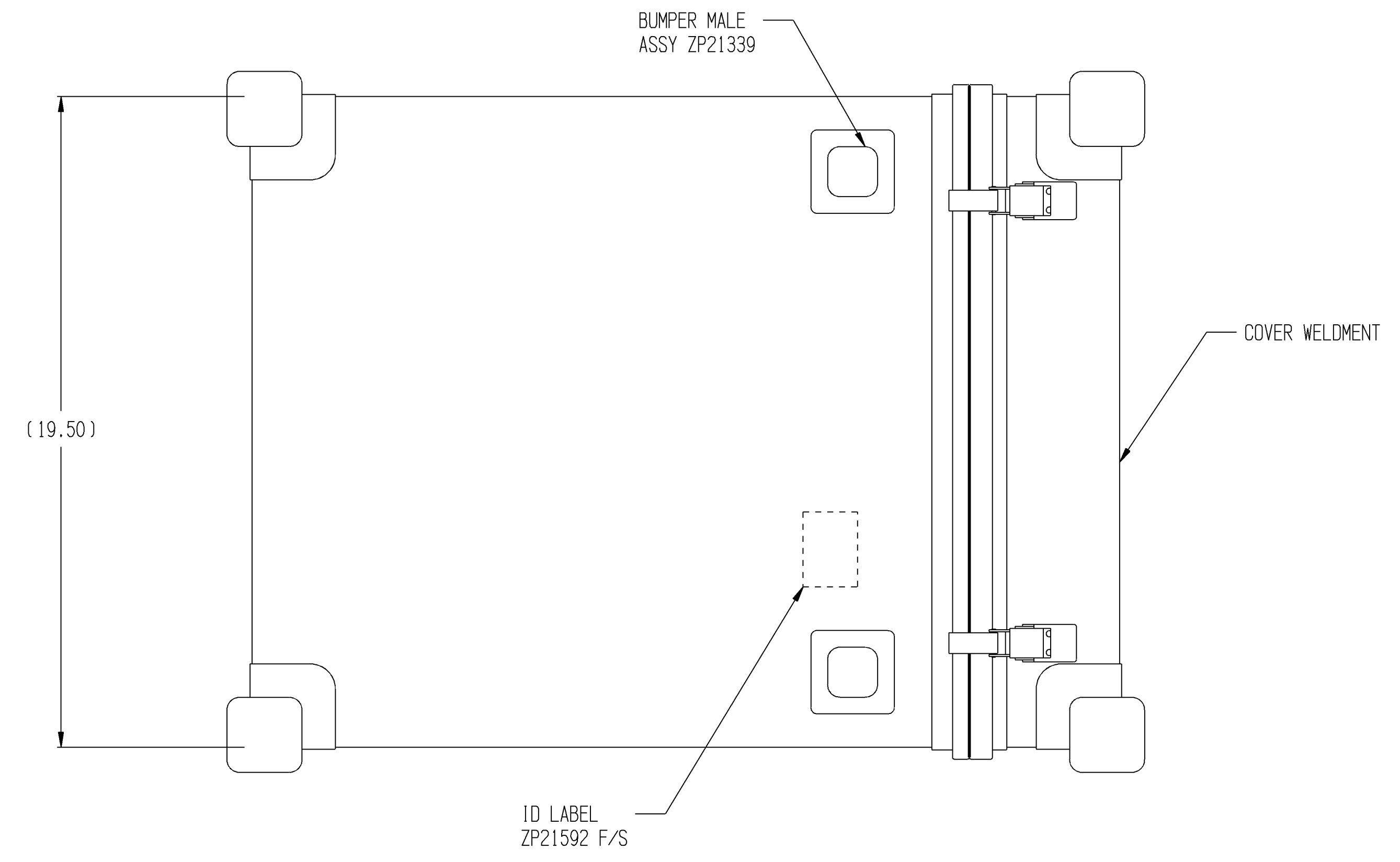
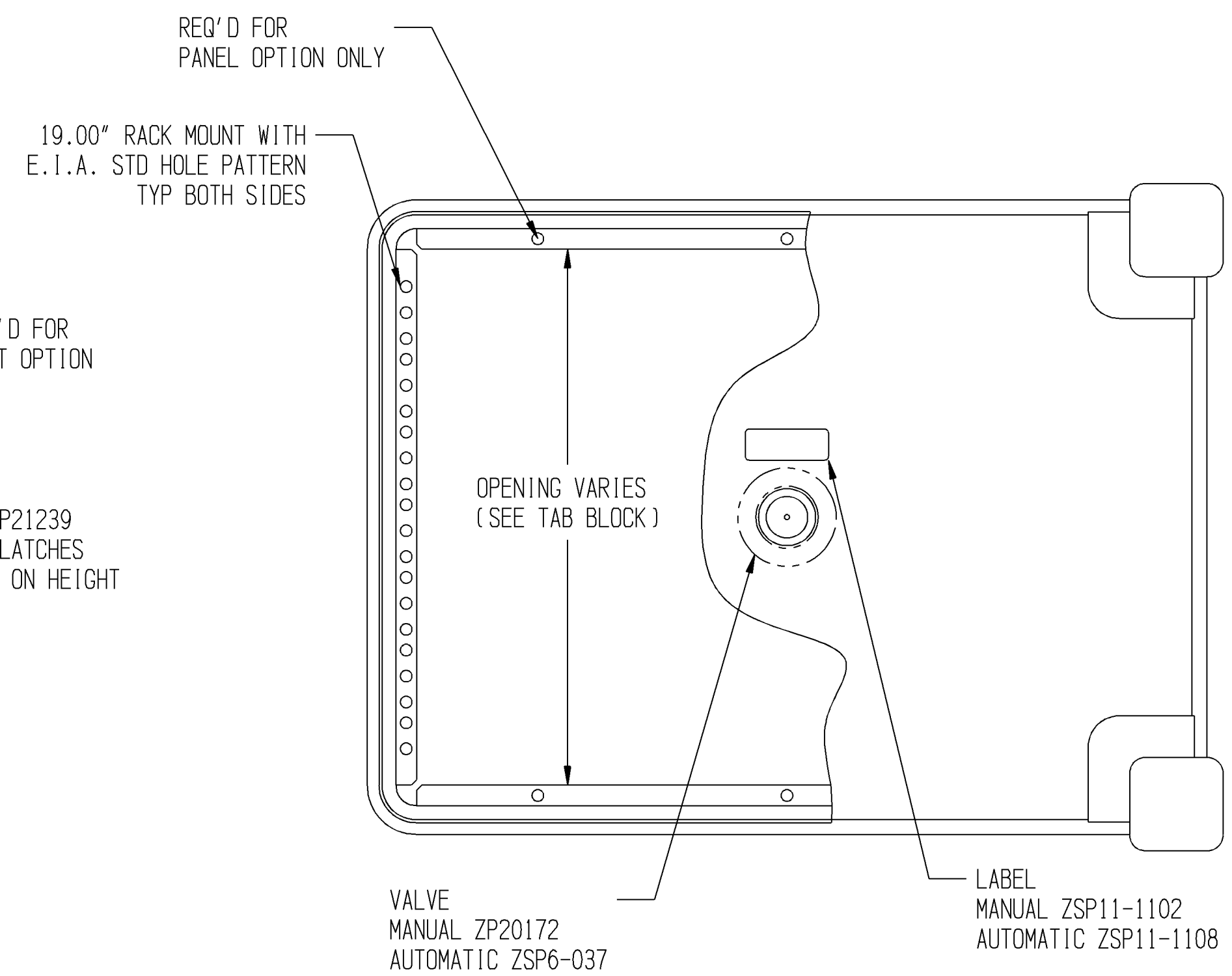
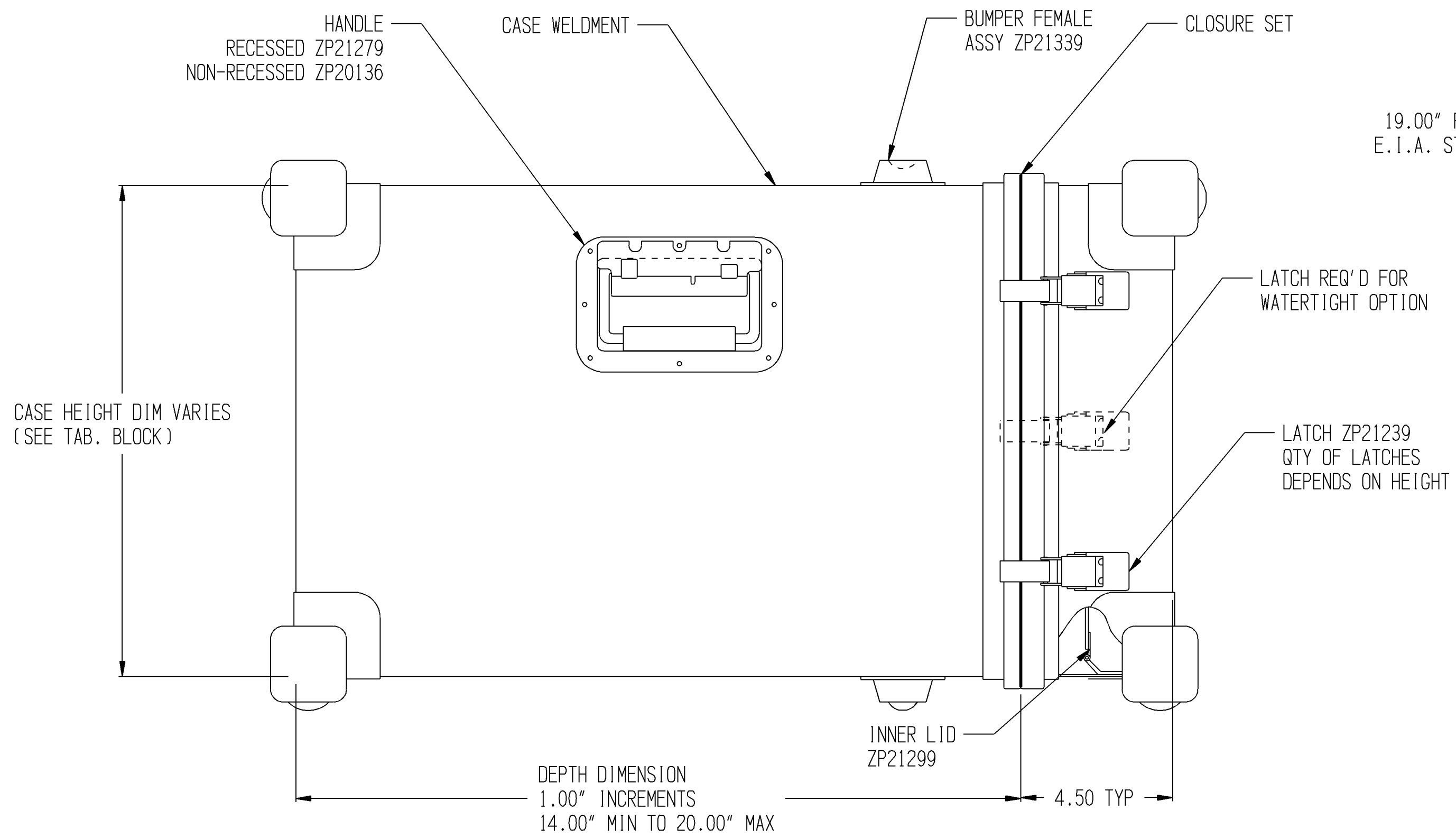
UNLESS OTHERWISE SPECIFIED
DIMENSIONS ARE IN INCHES
TOLERANCES ARE:
FRACTIONS DECIMALS ANGLES
± 1/32 .XX ±.03 ± 1/2°
DO NOT SCALE DRAWING

ZERO ZERO MANUFACTURING, INC.
North Salt Lake, UT 84054

CASE ASSEMBLY
VAL-AN SERIES 900

SIZE	CAGE NO.	DWG. NO.
D	98376	920
SCALE 1:4	SHEET 1 OF 2	

REVISIONS				
ZONE	REV	DESCRIPTION	DATE	APPROVED



TABULATION BLOCK				
DASH NO.	PANEL HEIGHT		CASE HT.	FRAME OPENING (REF)
	DIM	REF.		
-	SPECIAL SIZE			
-5	5.25	(3U)	6.94	5.25
-7	7.00	(4U)	8.69	7.00
-8	8.75	(5U)	10.44	8.75
-10	10.50	(6U)	12.19	10.50
-14	14.00	(8U)	15.69	14.00
-17	17.50	(10U)	19.19	17.50
-21	21.00	(12U)	22.69	21.00
-24	24.50	(14U)	26.19	24.50
-28	28.00	(16U)	29.69	28.00

MIL-T-28800 STYLE "A" OPTION
SHOWN SHEET 2

This document and the drawings and the technical data contained hereon are the property of Zero Mfg. Inc., formerly APW Zero Cases, Zero Enclosures, and Zero Mfg. Co. Reproduction or dissemination in any form except as expressly authorized by the owner is forbidden. The holder agrees to return this document to the owner on demand.
Copyright by Zero Mfg. Inc.

ZERO ZERO MANUFACTURING, INC.
North Salt Lake, UT 84054

SIZE CASE NO. DWG. NO.
D 98376 920

DO NOT SCALE DRAWING FILE 920--revF-S2.ckd SCALE 1/3 ZERO STD SHEET 2 OF 2

DWG. NO. 920
SHEET 2